

Status: 01/2025



Print and
apply systems
for printing with two colors

Hermes C
Made in Germany

Print labels with two colors and apply them in real time

Hermes C is the world's first system for printing labels with two colors and applying them right after. It has been designed in particular for applications according to GHS.

Integral retraction enables individual labels be printed and applied on demand without loss.

All shapes of containers can be labeled, such as bottles, cans, barrels, buckets, cardboard boxes or pallets.

A modular system provides solutions for any application.



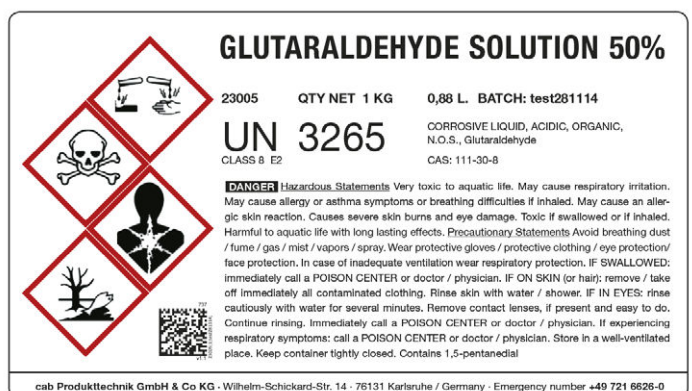
- Designed for industrial operation
- Easy to install in production lines
- Interface-based access to ERP and process control systems

For the labeling of chemicals and hazardous substances GHS and REACH demand standardized pictograms. The directives apply worldwide. Hazard symbols, such as empty diamonds, are not permitted.

Hermes C enables individual labels be designed and printed.

cab supplies labels and ribbons for Hermes C applications, certified to BS5609/3, if required (see page 11).

Sample label



Scopes of delivery, design and technical specifications correspond to the date of the printing. Subject to change. The data provided in the catalog do not represent any warranty or guarantee. See current data on www.cab.de/en/hermes

Technical details



1 Graphic display

White backlighting enables good legibility. Depending on the installation, the display can be rotated in steps of 90°.

2 Navigator pad

In addition to the display, it enables simple menu control. The day-and-night design only features operable positions.

3 Ribbon retainer

Replacing a ribbon is no big deal thanks to three-part clamping axles.

4 Metal chassis

Resistance to torsion facilitates component assembly. Made of cast aluminum

5 Print positioning

It is implemented automatically after a new roll of labels has been inserted. Reference values remain intact even when a unit is switched off.

6 Print heads 1 and 2

Select pressing force according to the width of a label.

7 Automatic ribbon saving

Print head 1 is lifted along unprinted spots of a label and the ribbon is stopped while such labels are fed.

8 Pulling system

Ball-bearing transport rollers enable accurate print images.

9 Label unwinder

A swing arm and an integral brake enable labels be unwound at constant force.

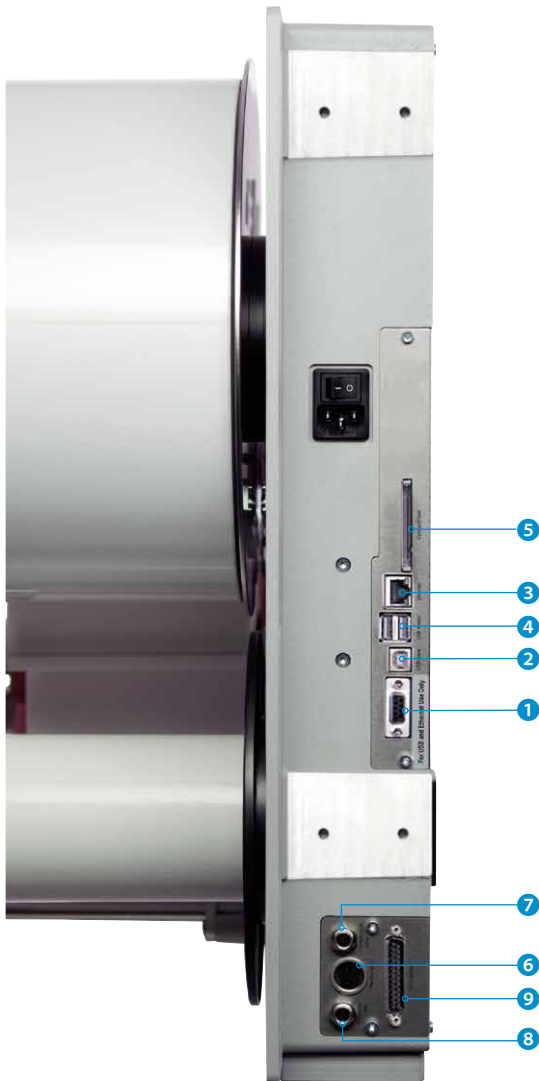
10 Liner rewinder

Subsequent to all the labels been dispensed, the entire liner tape is rewound. Rolls can be removed easily on the basis of an expanding axle.

11 Cover

It can be assembled to prevent from dust or damage.

Required interfaces



- ❶ RS232-C (limited access)
- ❷ USB 2.0 slave
- ❸ Ethernet 10/100 Mbit/s TCP/IP
- ❹ Two USB master for plugging an external control panel, a keyboard, scanner or service key
- ❺ CompactFlash Type I memory card
- ❻ Warning light indicating the state of a unit
 - Green Unit ready
 - Yellow Prior warning to a label web or a ribbon ending
 - Red Error
- ❼ Main valve for switching compressed air supply ON or OFF
- ❽ External e-stop: In conjunction with plugging a main valve, compressed air supply can be suspended in the event of danger.
- ❾ Digital I/O: SUB-D, 25 pins, compliant to IEC/EN 61131-2, types 1+3
The inputs and outputs are galvanically isolated and protect from reverse polarity. The outputs are also short-circuit-proof.

PNP inputs

Start printing / applying label
 Reprint
 Label feed
 Delete print job
 Pause
 Label removed
 Reset
 Stop printing / applying label
 Print first label

PNP outputs, NPN upon request

Unit ready
 Print data available
 Paper feed ON
 Prior warning to a ribbon ending
 Prior warning to a label web ending
 Ribbon ending
 Label web ending
 Label peeled off
 Initial / upper end position
 Label apply / lower end position
 Collective error

Technical data

| | | | |
|--|--|--|--|
| | | | 1.1 |
| Label printer | | | Hermes C 6L/300-3 |
| Print head | | | |
| Print method | | | Thermal transfer |
| Print resolution | | | 300 dpi |
| Print speed | | | 125 mm/s max. |
| Print width | | | 162.6 mm max. |
| Material | | | |
| Labels on a roll | | | Paper, synthetics such as PET, PE, PP, PVC, PU, acrylate, PI |
| Thickness | | | 0.03 - 0.06 mm |
| Width Label ¹⁾ | | | 46 - 176 mm |
| Liner | | | 50 - 180 mm |
| Height of a label | | | 20 - 356 mm |
| Material | | | Speed mm/s 100 (set by default) |
| backfeed | | | Distance mm 115 |
| Roll | | | Outside diameter mm max. 305 |
| | | | Core diameter mm 76 |
| | | | Winding outside or inside |
| Ribbon | | | |
| Color layer | | | outside or inside |
| Roll | | | Outside diameter mm max. 80 |
| | | | Core diameter mm 25 |
| Length | | | m max. 450 |
| Width ²⁾ | | | mm max. 165 |
| Automatic ribbon saving on print head 1 | | | ■ |
| Internal rewinder | | | |
| Outside diameter | | | mm max. 210 |
| Core diameter | | | mm 76 |
| Dimensions, Weight | | | |
| Height x Depth x Width | | | mm 550 x 630 x 320 |
| Weight | | | kg approx. 30 |
| Label sensor | | | |
| Transmissive | | | detecting leading margins of a label and materials ending |
| Distance to locating edge | | | mm 4 - 47 |
| Electronics | | | |
| Processor, 32 bit clock rate | | | MHz 266 |
| RAM | | | MB 64 |
| IFFS | | | MB Flash 8 |
| Slot for plugging CompactFlash Type I | | | ■ |
| Battery for date and real time display / Data preserved if power turns off | | | ■ |
| Acoustic alarm in cases of errors | | | ■ |
| Interfaces | | | |
| RS232-C 1,200 to 230,400 baud / 8 bits | | | ■ |
| USB 2.0 Hi-Speed slave for plugging a PC | | | ■ |
| Ethernet 10/100 Mbit/s, LPD, RawIP printing, FTP printing, DHCP, HTTP, FTP, SMTP, SNMP, TIME, Zeroconf, mDNS, SOAP | | | ■ |
| 2 USB master for plugging an external control panel, a keyboard, scanner, service key | | | ■ |
| Warning light | | | ■ |
| Digital I/O | | | ■ |
| Applicator | | | ■ |
| External e-stop | | | ■ |
| Compressed air main valve | | | ■ |
| Operating data | | | |
| Voltage | | | 100 - 240 VAC ~ 50/60 Hz, PFC |
| Consumption of power | | | <10 W in standby / 100 W in typical operation / max. 165 W |
| Temperature / Operation: | | | +5 - 40 °C / 10 - 85 %, not condensing |
| humidity Stock: | | | 0 - 60 °C / 20 - 80 %, not condensing |
| Transport: | | | -25 - 60 °C / 20 - 80 %, not condensing |
| Approvals | | | CE, FCC class A, ICES-3 |
| Control panel | | | |
| Keys / LED | | | Pause, Feed, Cancel, Menu, Enter, 4 cursors |
| LCD graphics display | | | Width 60 mm, height 40 mm, four lines of text |
| Setup options | | | |
| Time, date, digital and analog clock, language and unit settings, print parameters, interfaces, security | | | |
| Status bar on display | | | |
| Receive data | | | Print head temperature |
| Ethernet | | | Memory card access |
| Used memory | | | abc debug |
| | | | Input buffer |
| | | | Ribbon remaining |

■ standard □ option

| | | |
|--|--|---|
| Controls | | |
| Print stop | End of ribbon, end of label web, print head open | |
| Prior warning | Ribbon ending, label web ending | |
| Test routines | | |
| System diagnostics | upon startup, detection of print head included | |
| Brief status report, status printout | Fonts list, list of units, WLAN status, label profile, test grid, monitor mode, PPP status | |
| Status reports | - Printout of print durations, running hours, etc. - Status of a unit requested by software command - Display of errors, related to, for example, a network, a link missing, a barcode | |
| Fonts | | |
| Types | 5 bitmap fonts including OCR-A, OCR-B and 3 vector fonts Swiss 721, Swiss 721 Bold, Monospace 821 are integral, TrueType fonts are for memory. | |
| Sets of characters | Windows -1250 to -1257, DOS 437, 737, 775, 850, 852, 857, 862, 864, 866, 869, EBC DIC 500, ISO 8859-1 bis -10 and -13 to -16, WinOEM 720, UTF-8, MacRoman, DEC MCS, KOI8-R. All Western European and Eastern European, Latin, Cyrillic, Greek, Hebrew and Arabian characters are supported. Simplified Chinese and Thai are options | |
| Bitmap | 1 mm to 3 mm wide and high Zoom factors 2 to 10 0°, 90°, 180°, 270° orientations | |
| TrueType | 0.9 mm to 128 mm wide and high Continuous zoom 360° orientation in steps of 1° | |
| Styles | Bold, italic, underlined, outline, inverse - depending on the font type | |
| Character spacing | Proportional | |
| Graphics | | |
| Elements | Lines, arrows, rectangles, circles, ellipses - filled and gradient | |
| Formats | PCX, IMG, BMP, TIF, MAC, GIF, PNG | |
| Codes | | |
| 1D barcodes, linear | Code 39, Code 93 Code 39 Full ASCII Code 128 A, B, C EAN 8, 13 EAN/UCC 128 EAN/UPC Appendix 2 EAN/UPC Appendix 5 FIM HIBC | Interleaved 2/5 Ident and routing code of Deutsche Post Codabar JAN 8, 13 MSI Plessey Postnet RSS 14 UPC A, E, E0 |
| 2D codes, stacked codes | Aztec, Codablock F, DataMatrix, PDF 417, Micro PDF 417, UPS MaxiCode, QR-Code, RSS 14 truncated, limited, stacked, omni-directional, EAN DataMatrix, GS1 Data Bar All codes may vary in height, modular width and ratio. 0°, 90°, 180°, 270° orientations Feasibility of check digits, plain text printouts and start/stop coding depending on the type of code | |
| Software | | |
| Control | Direct JScript programming abc Basic Compiler Database Connector | ■ ■ ■ |
| Administration | Printer control Administration Network Manager | ■ ■ |
| Label software | cablabel S3 Lite cablabel S3 Viewer cablabel S3 Pro cablabel S3 Print | ■ ■ □ □ |
| Windows printer drivers certified WHQL for | Windows 10 Windows 11 | Server 2016 Server 2019 Server 2022 ■ |
| Stand-alone operation | | ■ |

¹⁾ Limitations may occur with small labels, slim or strongly adhesive materials. Critical applications require testing.

²⁾ A ribbon should be at least as wide as the liner material.

4126/4136 stroke applicators

2.1



Tamp-on pad

Labels are precisely pressed onto flat surfaces.



Tamp-on pad, spring-mounted

Labels can be pressed even onto surfaces inclined by up to 8°.



Roll-on pad

Labels are rolled onto the flat surfaces of items during transport.

Silicone pads

are available upon request

Stroke applicator

Labels are applied in real time from all sides onto packagings or items at rest or in motion (depending on the pad in use). Printed labels are taken over by a pad on the peel-off plate. The pad with a label are moved by a short-stroke cylinder in horizontal direction to the point of application. Labels are then applied onto items by a stroke cylinder. The length of the stroke cylinder defines the maximum distance of an item to the peel-off plate.

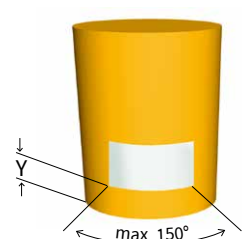
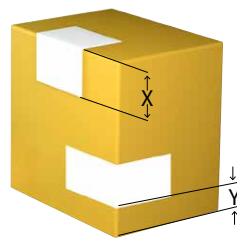
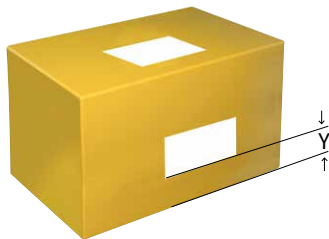
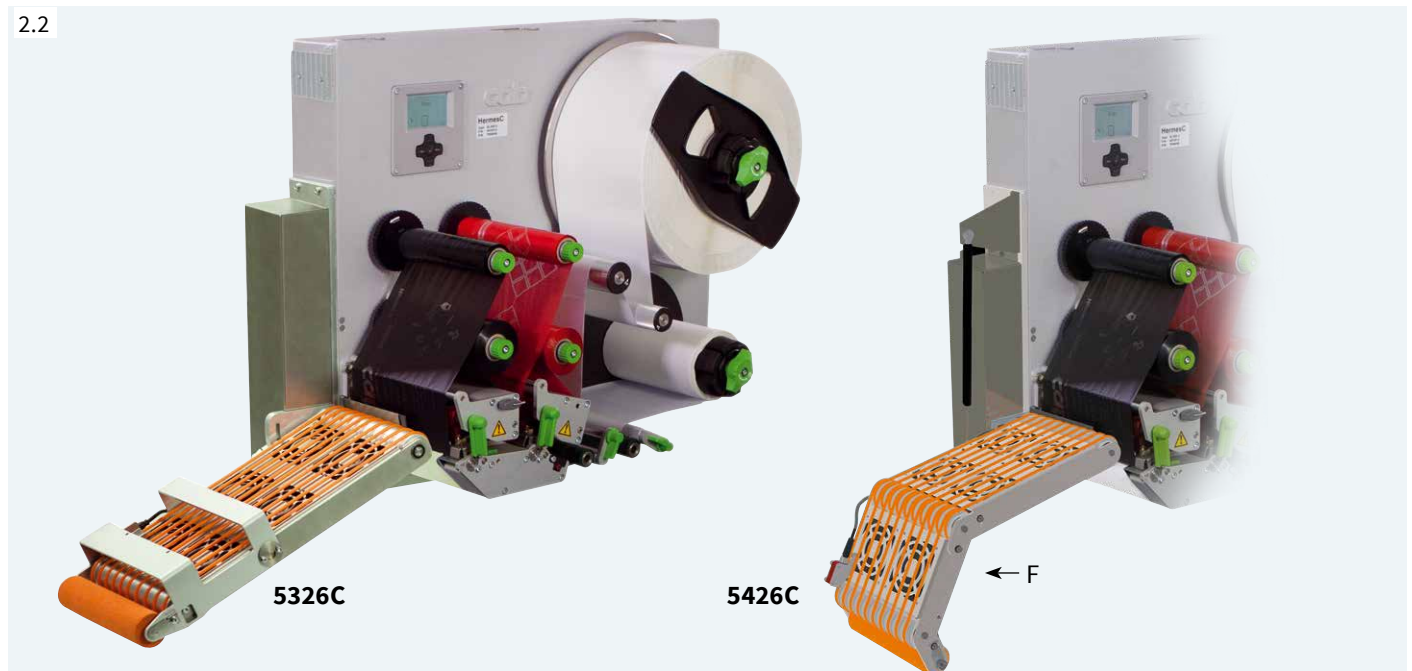
| Stroke applicator | | 4126C-300 | 4126C-400 | 4136C-300 ¹⁾ | 4136C-400 ¹⁾ |
|---|----------------------------------|---|---|---|---|
| Cylinder stroke | mm | 300 | 400 | 300 | 400 |
| Height of an item | | flexible | flexible | flexible | flexible |
| Horizontal stroke cylinder | mm | 25 | 25 | 25 | 25 |
| Label application | | from the top, from below, from the side | from the top, from below, from the side | from the top, from below, from the side | from the top, from below, from the side |
| Weight of applicator | packaging excluded kg | 7 | 7.5 | 6.5 | 7.5 |
| Consumption of power | W max. | 15 | 15 | 15 | 15 |
| Compressed air | bar | 4.5 | 4.5 | 4.5 | 4.5 |
| Blow tube | no. | 1 | 1 | 2 | 2 |
| Cycle rate | labels/min approx. ²⁾ | 20 | 20 | 20 | 20 |
| Tamp-on pad | | 4126C-11 F | 4126C-12 F | 4126C-19 F | - |
| Label width | mm | 46 - 174 | | | - |
| Label height | mm | 20 - 100 | | | - |
| Distance of an item to the bottom of a unit | mm max. | 220 | 320 | | - |
| Depth F ³⁾ of a pad immersing | mm max. | 50 | | | - |
| State of an item at the moment a label is applied | | at rest | | | - |
| Tamp-on pad, spring-mounted | | 4126C-3900 | | 4136C-3900 | |
| Label width | mm | 80 - 174 | | 80 - 174 | |
| Label height ⁴⁾ | mm | 80 - 150 | | 151 - 356 | |
| Distance of an item to the bottom of a unit | mm max. | 215 | 315 | 215 | 315 |
| State of an item at the moment a label is applied | | at rest | | at rest | |
| Roll-on pad | | 4126C-4900 | | 4136C-4900 | |
| Label width | mm | 50 - 174 | | 50 - 174 | |
| Label height ⁴⁾ | mm | 80 - 150 | | 151 - 356 | |
| Distance of an item to the bottom of a unit | mm max. | 245 - 275 | 345 - 375 | 275 - 360 | 375 - 460 |
| State of an item at the moment a label is applied | | in motion | | in motion | |

¹⁾ synthetic labels only ²⁾ calculated using labels 100 mm high and a print speed of 125 mm/s

³⁾ If an applicator immerses more than 25 mm, the cover of Hermes C must be adapted. ⁴⁾ Inside-winding is preferred with labels as high as 210 mm.

5326/5426 vacuum belt applicators

2.2



Vacuum belt applicator

Labels are applied in real time onto packagings or items in motion. Labels can be applied from all sides onto flat or cylindric surfaces. Corner-wrap applications are as well possible.





Printed labels are taken over on the peel-off plate. They move along a vacuum belt to the point of application and are applied, triggered by an external signal. While a label is dispensed, the next one can already be printed.









| Technical data | Vacuum belt applicator | |
|---|------------------------|--|
| | 5326C | 5426C |
| Label application | onto flat surfaces | onto cylidric surfaces and corner-wrap |
| Direction to which labels are dispensed | left | left |
| Label width mm | 46 - 174 | 46 - 174 |
| Label height mm | 80 - 356 | 80 - 356 |
| State of an item in motion | ■ | ■ |
| at the moment a label is applied | | |
| Label application from the top | ■ | ■ |
| from below | ■ | - |
| from the side | ■ | ■ |
| Height of an item | fixed | fixed |
| Speed of an item m/s max. | 0.5 | 0.3 |
| Gap between items min. m | 1.0 | 0.6 |
| Weight of applicator packaging excluded kg | n.a. | 9 |
| Consumption of power W max. | 90 | 90 |
| Stability on the level a label is applied F=mm | - | 10 N x factor 3 |
| Corner-wrap labeling X mm max. | - | 180 |
| Cylinder labeling diameter mm at least | - | depending on the length of a label |
| Vacuum belt speed ¹⁾ mm/s | 100 - 500 | 100 - 300 |
| Cycle rate ²⁾ labels/min max. | 15 | 15 |
| Distance of a label to the conveyor belt, when applying from the side Y mm at least | 20 | 20 |

¹⁾ The speed of an item must be at least as high as the speed of the vacuum belt.

²⁾ calculated using labels 100 mm high and a print speed of 100 mm/s

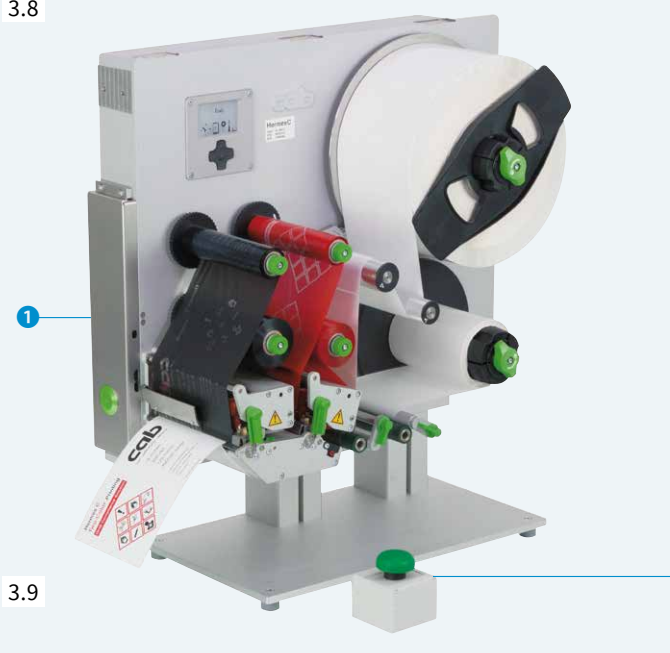
Accessories

| | Extra Hermes C equipment |
|-----|--|
| 3.1 |  <p>Cover V for vertical installation It prevents from dust and damage.</p> |
| 3.1 |  <p>Cover H for horizontal installation It provides an additional cover plate on the side on which items are processed.</p> |
| 3.2 |  <p>External control panel If the control panel of a printer cannot be accessed, an additional external one can be plugged. A slot for plugging a CompactFlash Type I memory card is provided, so is a USB host interface.</p> |
| 3.3 |  <p>Standard keyboard USB, 115 keys</p> |
| 3.4 |  <p>Memory card CompactFlash Type I for storing label formats, fonts, texts. Read / write graphics on a printer or PC</p> |
| 3.5 |  <p>Product sensor, 25 pins for connecting Hermes C Labels are triggered to be applied as soon as an item has been detached, e.g. on a conveyor belt.</p> |
| 3.6 |  <p>Interface plug All control signals can be attached to the I/O interface using clamping screws.</p> |

| | Interface |
|-----|--|
| 4.1 |  <p>Label selection - I/O box A maximum of 16 labels per box can be selected from a memory card by a superior control unit, such as a PLC.</p> |
| | Connecting cable |
| 5.1 |  <p>Connecting RS232-C cable 9/9 pins, 3 m</p> |
| | Extra applicator equipment |
| 6.1 |  <p>Blow tube 4"</p> |
| 6.1 |  <p>Blow tube 6"</p> |
| 6.2 |  <p>Unit for compressed air regulation It is assembled to the bracket. 4.5 bar default setting</p> |
| 6.3 |  <p>Unit for compressed air regulation providing an additional ON/OFF valve If operating Hermes C in a plant, compressed air required for the applicator can be switched ON and OFF externally. 4.5 bar default setting E-stop required</p> |
| 6.4 |  <p>Circular connector 3 pins, M8, for plugging a compressed air main valve</p> |
| 6.4 |  <p>Circular connector 4 pins, M8, for plugging an e-stop</p> |
| 6.5 | <p>Pressure regulating valve Installed on an applicator, it enables impact force be regulated.</p> |

Accessories

3.8



3.9

Dispensing labels and removing them by hand

A present sensor is required, a mount recommended.

The label printer can be assembled with or without a cover.

1 PS11 present sensor

1. Dispensing automatically

Labels are detected in peel-off position.

As soon as a label has been removed by hand, the next one is automatically printed.

2. Dispensing on demand

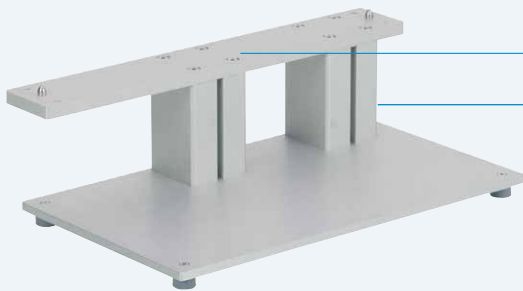
Printing and dispensing are triggered by touching the key on the present sensor.

2 TR2 hand switch

Dispensing is triggered on demand via the I/O interface.

The hand switch is connected by cable.

7.1



Mount

for fixing a label printer

1 Adapter plate

The label printer is assembled.

Alternatively, it can be installed directly to a production line, using the adapter plate and a profile.

2 Profile

120 mm standard length

Further lengths can be provided upon request.

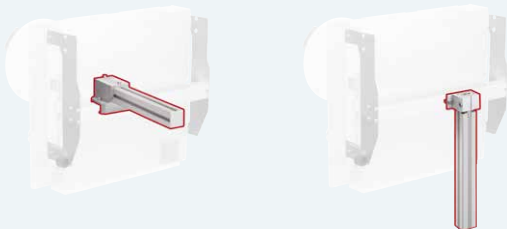
7.2



Bracket

for assembling Hermes C in any orientation to a stand or a production line.

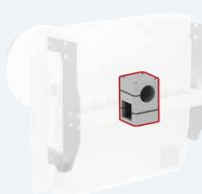
7.3



Clamped joint designed for 50 mm x 50 mm profiles

for moving a system in horizontal or vertical direction

7.3

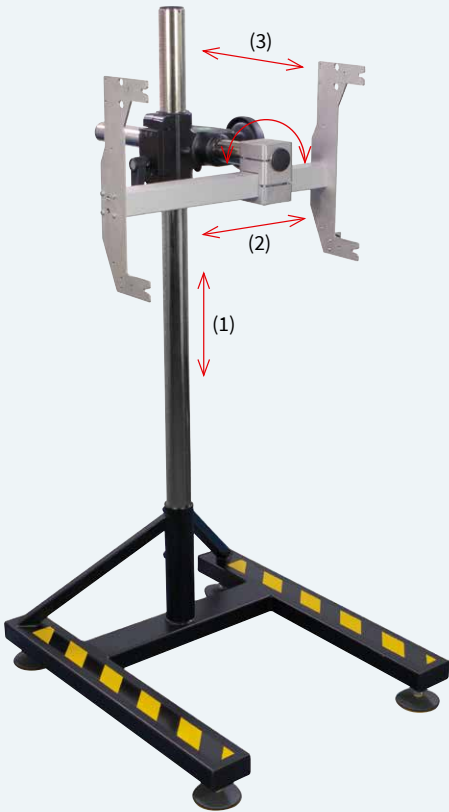


Clamped joint designed for diameter 50 mm

for moving a system in horizontal direction or rotate it around an axle (diameter 50 mm)

Stands for assembly

7.4



1622 stand

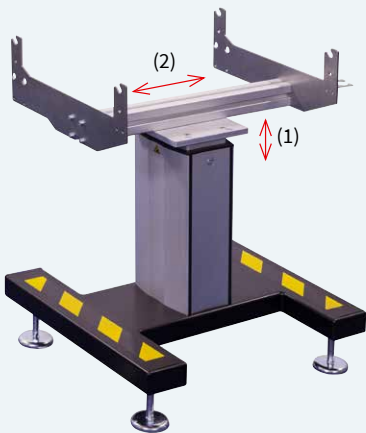
for installing Hermes C vertically in a production line.
A crank with a toothed bar allows heights and depths be adjusted.
In addition, Hermes C kann be rotated by 360° around its axle.

A unit for compressed air regulation can be assembled to the bracket, so can a warning light.

| Technical data | | 1622 stand |
|--|-----------------|------------|
| Leveling feet | alignment in mm | ± 15 |
| Load capacity | kg max. | 75 |
| (1) Distance from the bottom of a label printer to the floor | mm | 150-1,100 |
| (2) Depth transverse to the direction of transport | mm | 120 |
| (3) Depth along the direction of transport | mm | 100 |
| (4) Rotatable | by ° | ± 90 |
| Weight | kg approx. | 40 |



7.5



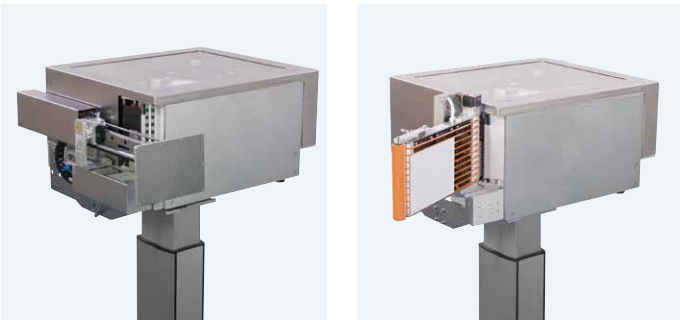
1221 stand

for installing Hermes C horizontally in a production line.
An internal spindle allows heights be adjusted continuously.

A unit for compressed air regulation can be assembled to the bracket, so can a warning light.

| Technical data | | 1221 stand |
|--|-----------------|------------|
| Leveling feet | alignment in mm | ± 15 |
| Load capacity | kg max. | 75 |
| (1) Distance from the bottom of a label printer to the floor ¹⁾ | mm | 720-960 |
| (2) Depth along the direction of transport | mm | ± 180 |
| Weight | kg approx. | 40 |

¹⁾ Further lengths can be provided upon request.



Labels and ribbons

- **Printing labels with two colors in real time**
- **Designed for chemical products** such as oils, paints or detergents.
- **On barrels, buckets, containers, pallets, etc.,** resistant to acids and salt water
- **Labeling according to GHS regulations**
- **Meeting British Maritime Standard BS5609, part 3.**
In this test, labels on an aluminum barrel must still adhere and be legible after a minimum of three months in sea water.

cab provides labels made of polyester or polypropylene as well as proper ribbons. Coordinate with cab.

Sample label

| | | | |
|--|------------------------------------|---------------|---|
| | GLUTARALDEHYDE SOLUTION 50% | | |
| | 23005 | QTY NET 1 KG | 0,88 L. BATCH: test281114 |
| | UN 3265 | | CORROSIVE LIQUID, ACIDIC, ORGANIC, N.O.S., Glutaraldehyde |
| | CLASS 8 E2 | CAS: 111-30-8 | |
| <p>DANGER Hazardous Statements Very toxic to aquatic life. May cause respiratory irritation. May cause allergy or asthma symptoms or breathing difficulties if inhaled. May cause an allergic skin reaction. Causes severe skin burns and eye damage. Toxic if swallowed or if inhaled. Harmful to aquatic life with long lasting effects. Precautionary Statements Avoid breathing dust / fume / gas / mist / vapors / spray. Wear protective gloves / protective clothing / eye protection / face protection. In case of inadequate ventilation wear respiratory protection. IF SWALLOWED: immediately call a POISON CENTER or doctor / physician. IF ON SKIN (or hair): remove / take off immediately all contaminated clothing. Rinse skin with water / shower. IF IN EYES: rinse cautiously with water for several minutes. Remove contact lenses, if present and easy to do. Continue rinsing. Immediately call a POISON CENTER or doctor / physician. If experiencing respiratory symptoms: call a POISON CENTER or doctor / physician. Store in a well-ventilated place. Keep container tightly closed. Contains 1,5-pentanedial</p> | | | |
| <p>cab Produkttechnik GmbH & Co KG · Wilhelm-Schickard-Str. 14 · 76131 Karlsruhe / Germany · Emergency number +49 721 6626-0</p> | | | |



Labels

Widths from 46 mm to 176 mm and heights from 20 mm to 356 mm are manufactured for Hermes C.



Ribbons

They match with Hermes C and the label materials and enable excellent print images at any time.

Resin resists to solvents and heat, wear and scratching.

Software features of the label printer

| | |
|--|---|
| <p>J H 100 O R S l1;0,0,68,70,100 T 10, 10,0,5,pt20;sample B 10,20,0,EAN-13,SC2,401234512345 G 8,3.5,0;R:30,9,0.3;0.3 A 1</p> | <p>Job start Speed of 100 mm/s Rotated by 180° in orientation Label size 100 mm x 68 mm, gaps of 2 mm Text / Font type: Swiss bold, 20 pt Barcode EAN 13, SC 2 size Rectangular graphic 30 mm x 9 mm, lines 0.3 mm wide 1 label for printing</p> |
|--|---|

Direct JScript programming

Any cab printer can be programmed directly using the JScript programming language. See manual. Best support for direct programming is given by the cablabel S3 software.

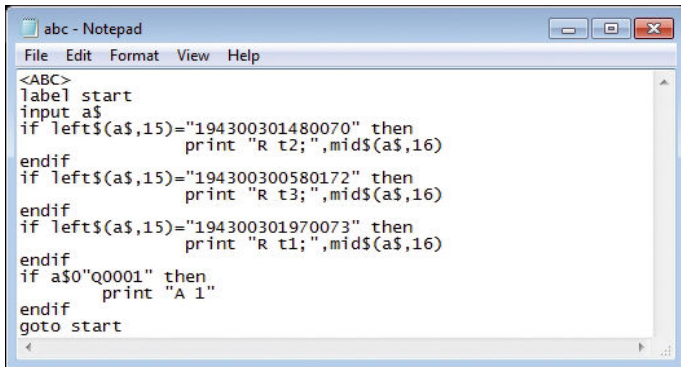
As an alternative, make use of any text editor.

Connecting to SAP®

Labels can be printed from SAP¹⁾ on cab devices and systems. There are various methods:

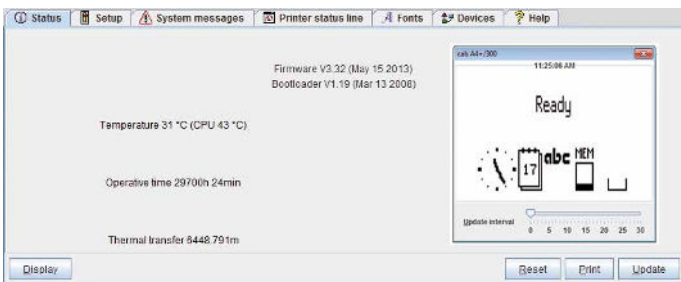
- Printing with SAPscript
- Printing with SmartForms
- Printing with Adobe Interactive Forms

See instructions in detail on www.cab.de/en/sap



abc Basic Compiler

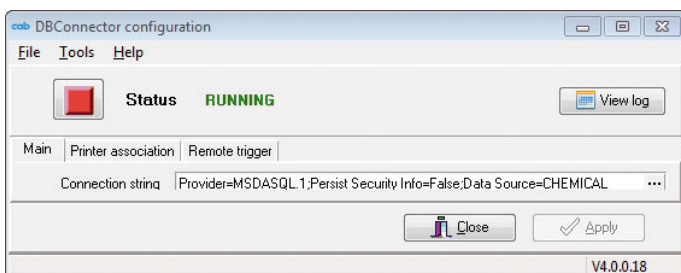
Integral to the firmware, it by simple Basic programming enables data be processed before they are edited for printout. For example, external printer languages can be replaced or data be imported from other systems such as scales or PLC.



Printer configuration on the Intranet / Internet

Integral HTTP / FTP servers enable a printer be controlled or configured, firmware be updated and memory cards be administrated using standard applications such as a web browser or a FTP client.

Administrators and operators on behalf of SNMP / SMTP are notified of states, alerts and errors by email or SNMP datagrams. Time and date are synchronized by a time server.



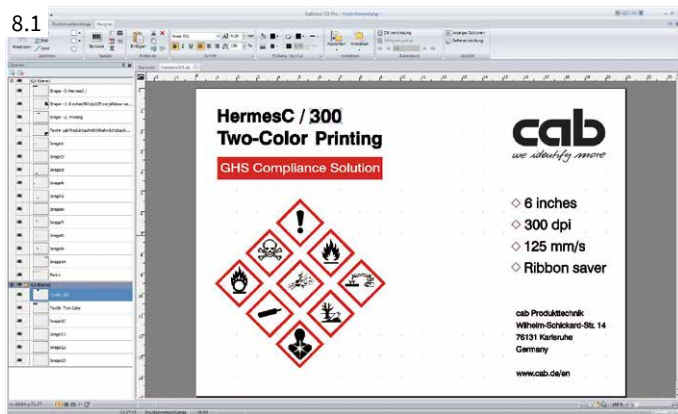
Database Connector

Printers in a network may access data from a ODBC / OLEDB database and print it on labels. Data can be rewritten to a database while print jobs are in progress.

¹⁾ SAP and associated logos are trademarks or registered trademarks of SAP SE.

Label software

8.1



cablabel S3 is provided for Microsoft[®] operating systems. Terminal servers / Citrix are not supported.

*) Microsoft is a registered trademark of the Microsoft Corporation.

cablabel S3 supports two-color design. Three features:

- Design
- Print
- Administrate

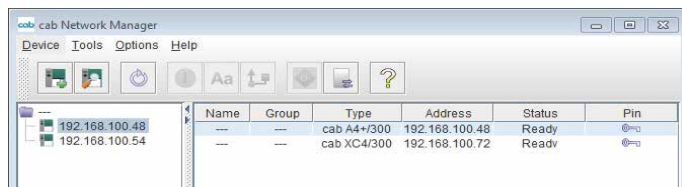
cablabel S3 opens up the full potential of cab devices. The user interface provides a comprehensive set of commands, for example different date, mathematical or logical formats.

Defining a label is first. Only when printing you decide whether to print on a label printer, a print and apply system or a marking laser system.

cablabel S3 enables a printer operate stand-alone, that is, select and print labels while not connected to a host system. Subsequent to a design, it provides all the files required for storing in the printer memory.

Modular design adapts cablabel S3 to requirements step by step. Plug-ins are embedded. Native JScript programming, for example, is supported by the JScript Viewer. The designer user interface and JScript codes synchronize in real time. Optional features can be integrated, such as the Database Connector or barcode verifiers.

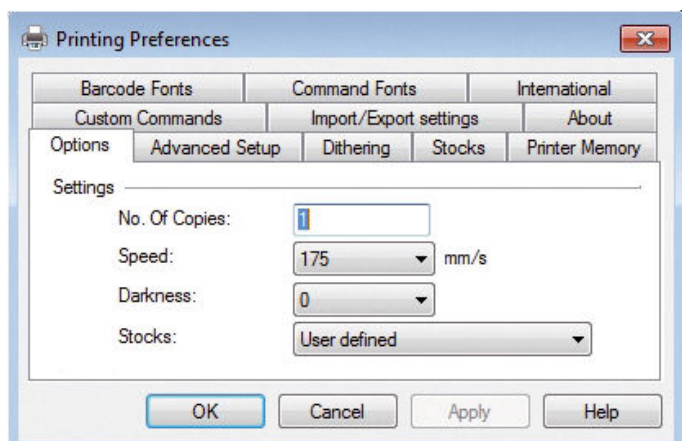
Supervising software



Administration Network Manager

Users supervise a number of printers simultaneously in a network. Printers can be controlled or configured, firmware be updated, data be synchronized and memory cards and PINs be administrated all from one place.

Printer drivers




















Windows printer drivers certified WHQL for
















Windows 10 Windows Server 2016
Windows 11 Windows Server 2019
 Windows Server 2022

Free download on www.cab.de/en/support

Delivery program

| Pos. | | Part no. | Unit |
|------|---|--|--|
| 1.1 |  | 5970313 | Hermes C 6L/300-3 label printer |
| Pos. | | Part no. | Applicators |
| 2.1 |  | 5972120 5972125 5972290 5972295 | 4126C-300 stroke applicator 4126C-400 stroke applicator 4136C-300 stroke applicator 4136C-400 stroke applicator |
| |  | xxxxxxx*) | 4126C-11 F tamp-on pad W x H 4126C-12 F tamp-on pad W x H 4126C-19 F tamp-on pad W x H |
| |  | xxxxxxx*) | 4126C-3900 tamp-on pad, spring-mounted, W x H |
| | | xxxxxxx*) | 4136C-3900 tamp-on pad, spring-mounted, W x H |
| |  | xxxxxxx*) | 4126C-4900 roll-on pad W x H |
| | | xxxxxxx*) | 4136C-4900 roll-on pad W x H |
| 2.2 |  | 5972910 5972140 | 5326C vacuum belt applicator 5426C vacuum belt applicator |
| Pos. | | Part no. | Extra Hermes C equipment |
| 3.1 |  | 5970475.001 | Cover V for vertical installation |
| |  | 5972493.001 | Cover H for horizontal installation, cover plate included |
| 3.2 |  | 5954380 | External control panel |
| 3.3 |  | 5901626 | Standard USB keyboard DE |
| 3.4 |  | 5561043 | CompactFlash Type I memory card |
| 3.5 |  | 5964300 | Product sensor, 25 pins for connecting Hermes C |
| 3.6 |  | 5917651 | I/O interface plug, SUB-D, 25 pins Phoenix Contact article 2761622 |
| 3.8 |  | 5972287 | PS11 present sensor |
| 3.9 |  | 5955710 | TR2 hand switch |
| Pos. | | Part no. | Interfaces |
| 4.1 |  | 5948205 | Label selection - I/O box |
| Pos. | | Part no. | Connecting cable |
| 5.1 |  | 5550818 | Connecting RS232-C cable 9/9 pins, 3 m |

*) Part no. specific to order

| Pos. | | Part no. | Extra applicator equipment |
|------|--|------------------------------------|--|
| 6.1 |  | 5964095.001 | Blow tube 4" |
| |  | 5964614.001 | Blow tube 6" |
| 6.2 |  | 5955735 | Unit L for compressed air regulation |
| 6.3 |  | 5955737 | Unit L for compressed air regulation providing an additional ON/OFF valve |
| 6.4 |  | 5918092 | Circular connector, 3 pins, M8 |
| |  | 5918003 | Circular connector, 4 pins, M8 |
| 6.5 | | 5972xxx.212 | Pressure regulating valve |
| Pos. | | Part no. | Tools for assembly |
| 7.1 |  | 5972289 xxxxxxx*) | Mount 120 Mount XXX, customer-specific heights |
| |  | 5972282 | Adapter plate |
| |  | xxxxxxx*) | Profile XXX, customer-specific lengths |
| 7.2 |  | 5972291 | Bracket C |
| 7.3 |  | 8914443 | Clamped joint, designed for 50 mm x 50 mm profile |
| |  | 5907394 | Clamped joint, designed for diameter 50 mm |
| 7.4 |  | 5972230 | 1622 stand |
| 7.5 |  | 5972447 | 1221 stand |
| Pos. | | Part no. | Label software |
| 8.1 |  | Bundle | cablabel S3 Lite (download on cab.de/en) |
| | | 5588001 | cablabel S3 Pro, 1 WS |
| | | 5588100 | cablabel S3 Pro, 5 WS |
| | | 5588101 | cablabel S3 Pro, 10 WS |
| | | 5588150 | cablabel S3 Pro, 1 add. licence |
| | | 5588151 | cablabel S3 Pro, 4 add. licences |
| | | 5588152 | cablabel S3 Pro, 9 add. licences |
| | | 5588002 | cablabel S3 Print, 1 WS |
| | | 5588105 | cablabel S3 Print, 5 WS |
| | | 5588106 | cablabel S3 Print, 10 WS |
| | | 5588155 | cablabel S3 Print, 1 add. licence |
| | | 5588156 | cablabel S3 Print, 4 add. licences |
| | | 5588157 | cablabel S3 Print, 9 add. licences |
| 8.2 | | 9008486 | Programming manual EN, printed copy |

Overview of cab products

Label printers
MACH1, MACH2



Label printers
EOS 2



Label printers
EOS 5



Label printers
MACH 4S



Label printers
SQUIX 2



Label printers
SQUIX 4



Label printers
SQUIX 6.3



Label printers
SQUIX 8.3



Label printers
XD Q double-sided



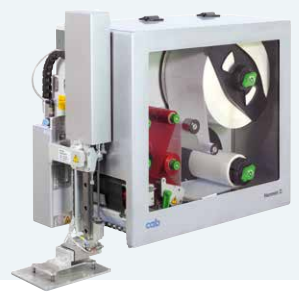
Label printers
XC Q two-colored



Print and apply systems
HERMES Q



Print and apply systems
Hermes C two-colored



Tube labeling systems
AXON 1



Print modules
PX Q



Labels and ribbons



Label software
cablabel S3



Label dispensers
HS, VS



Labeling heads
IXOR



Marking lasers
XENO 4



Laser marking systems

